

THE STRATHCLYDE 5FT DATA SHEET

30w

EGG30N40HA

OPAL PRISM LED

EGG60N40HA

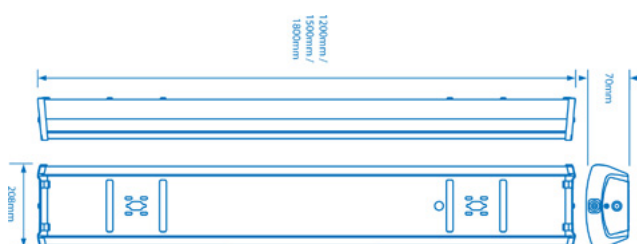
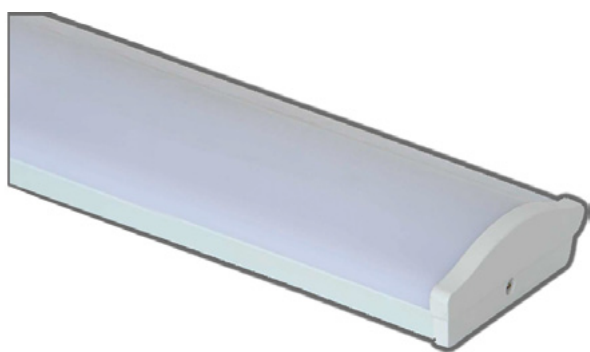
60w

110
lm/w

EMERGENCY
& DIMMABLE
OPTIONS

4000K
NEUTRAL
WHITE

5 YEAR
WARRANTY



The strathclyde is an ideal replacement for linear fluorescent luminaires and has been designed for surface mounting in office and educational environments.

- Steel bookplate with poly-carbonate diffuser, secured by screwed end caps.
- Uses high quality opal prismatic diffuser for reduced glare.
- Suitable for suspended mounting (suspension kit available to order separately)

Components



STANDARDS

EN 60598-1	Luminaires - General requirements
EN 60598-2-1	Luminaires - Fixed
EN 60598-2-22	Luminaires - Emergency
EN 61347-1	Lamp controlgear - Part 1: General and safety requirements
EN 61347-2-13	Lamp controlgear - Part 2-13 : Particular requirements for d.c. or a.c. supplied electronic controlgear for LED modules
EN 55015	Limits and methods of measurement of radio disturbance characteristics of electrical lighting and similar equipment
EN 61547	Equipment for general lighting purposes - EMC immunity requirements
EN 61000-3-2	Electromagnetic compatibility (EMC) - Part 3-2: Limits - for harmonic current emissions
EN 62471	Photobiological safety of lamps and lamp systems
2002/96/EC	Waste Electrical & Electronic Equipment (WEEE)
2011/65/EU	Restriction of the use of certain Hazardous Substances in EEE (RoHS)
(EC) No 1907/2006	The Registration, Evaluation, Authorisation and Restriction of Chemicals (REACH)



Wattage (w)	30	60
Lumens (lm)	3300	6600
Efficacy (lm/W)	110	
Colour Temp (K)	4000	
CRI	>80	
Dimensions(mm)	1500*208*70	
UK Warranty (years)	5 ext.	
Dimmable Option	✓	
Emergency Option	✓	
Sensor	Microwave	

